

LIMBO – A Load Intensity Modeling Platform

Based on the Descartes Load Intensity Model

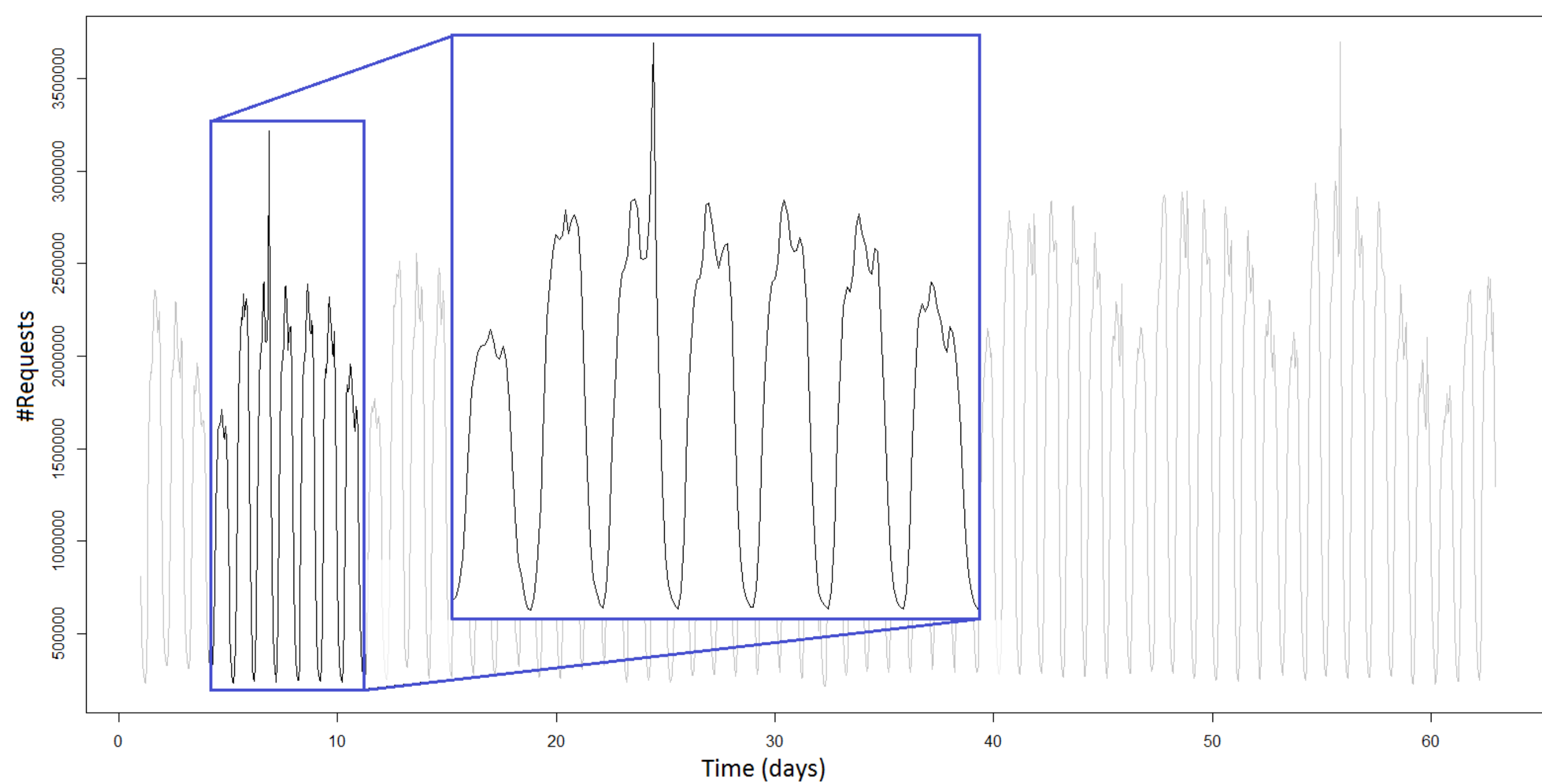
Jóakim v. Kistowski, Nikolas Herbst, Samuel Kounev



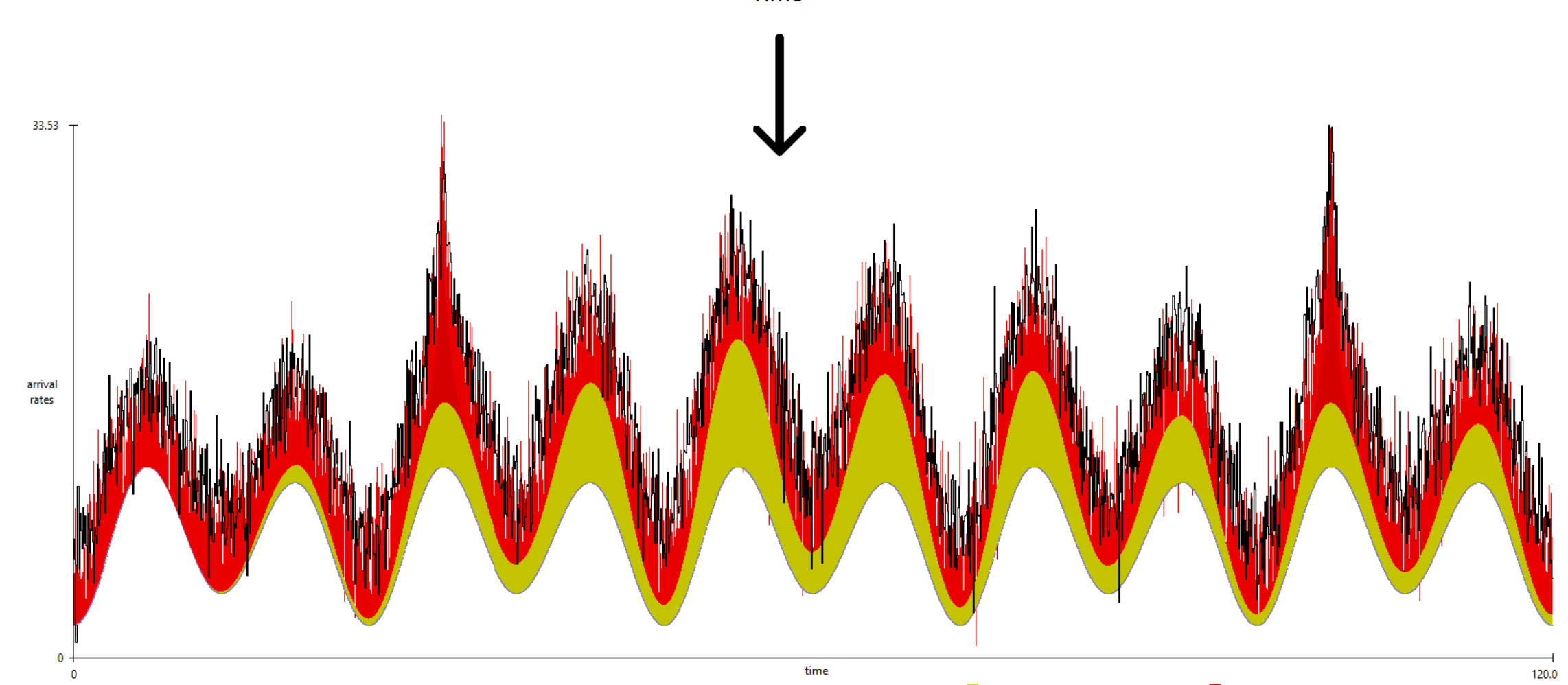
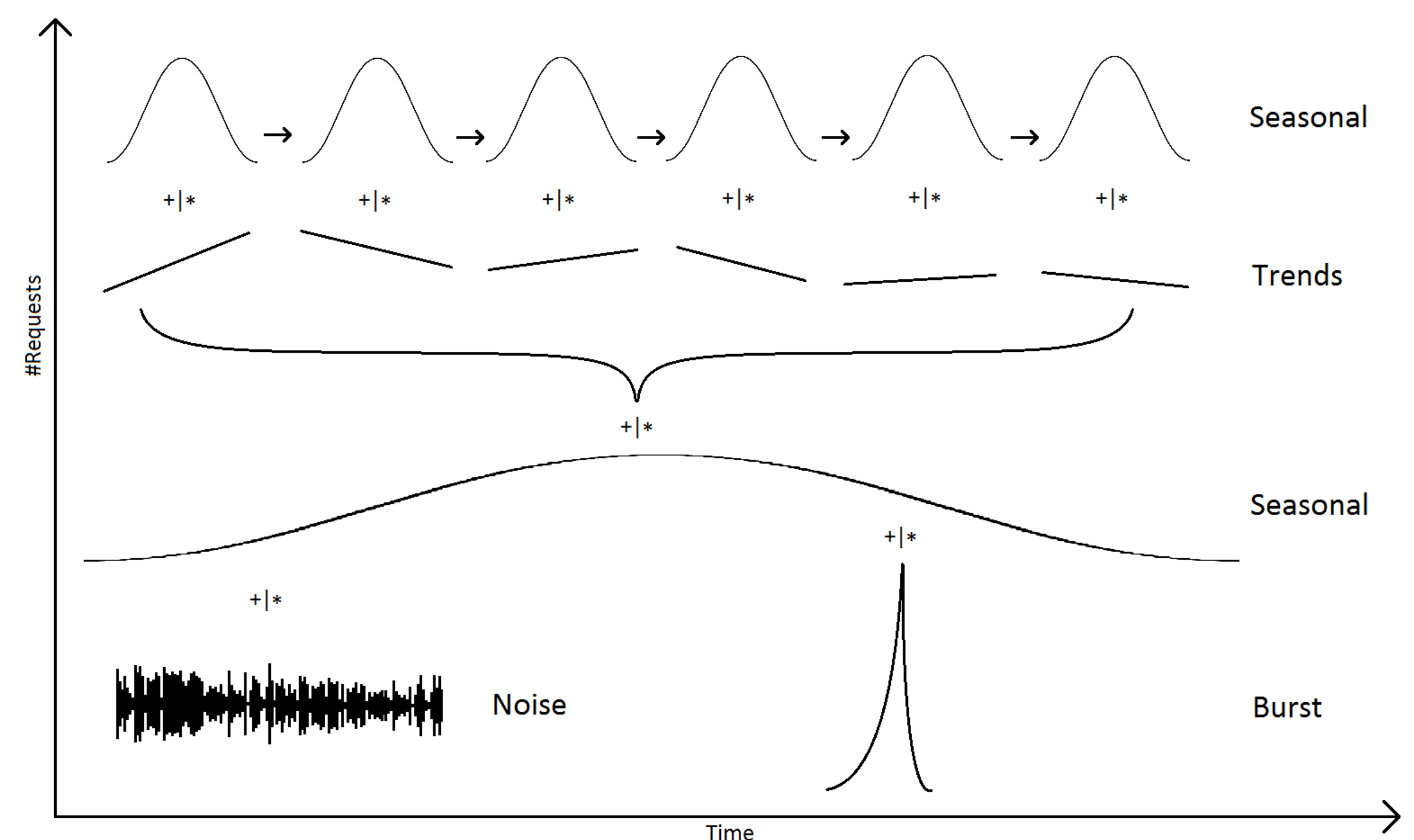
<http://www.descartes-research.net/tools>

Motivation

- Capture and Describe Load Intensity Profiles
- Create Custom Load Intensities for Open-Workload based Benchmarking

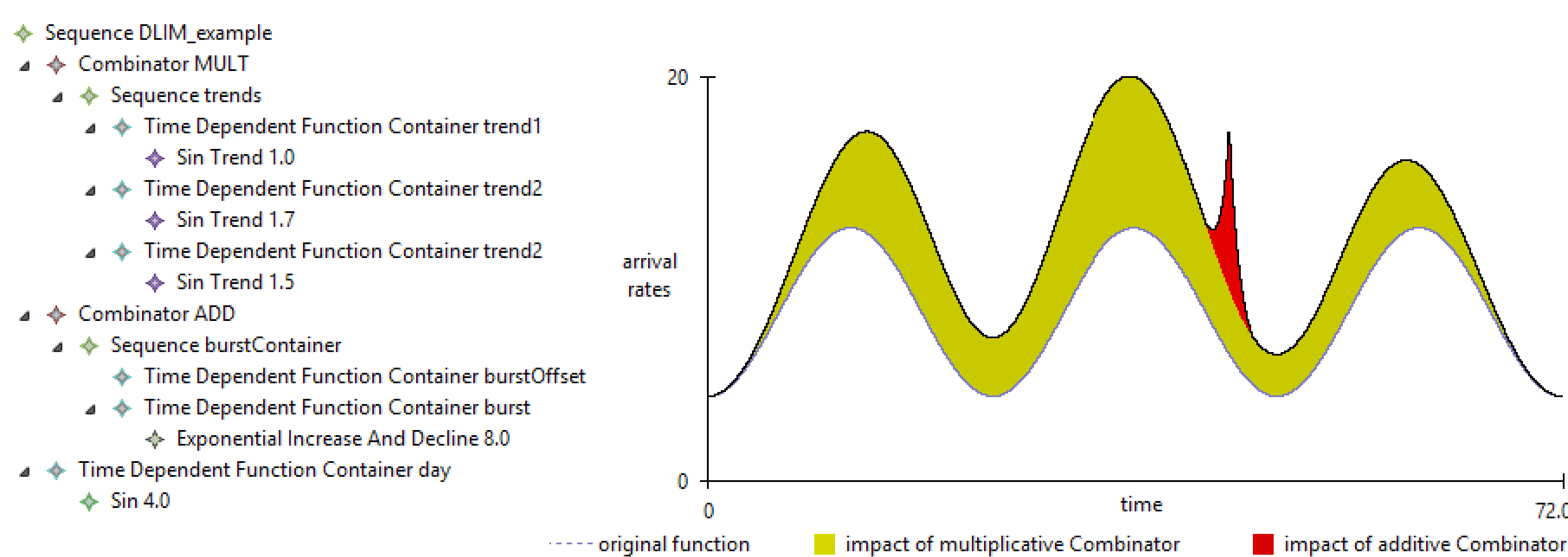


Model Load Intensity Profiles, including Seasonal Patterns, Trends, Bursts, Noise



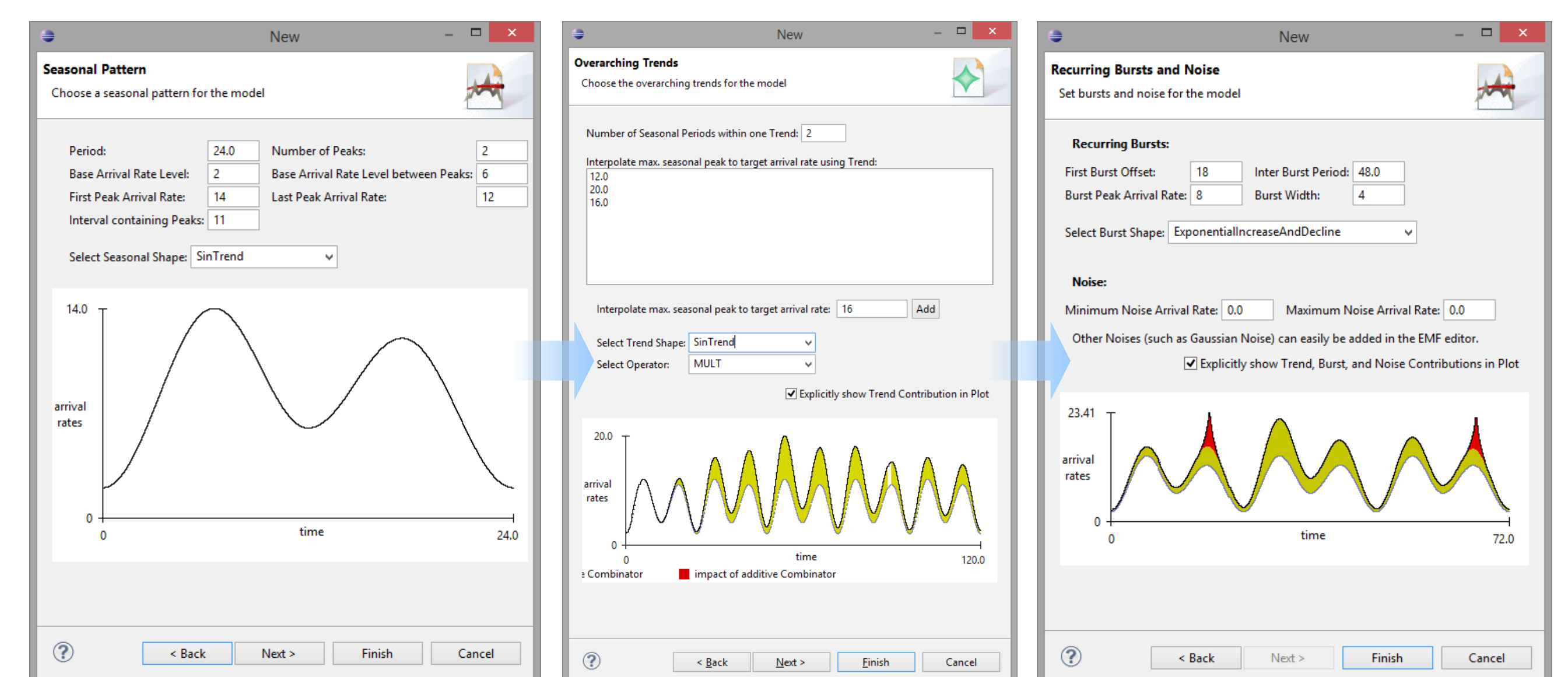
Descartes Load Intensity Model

- Use piece-wise mathematical functions for accurate Load Intensity Description



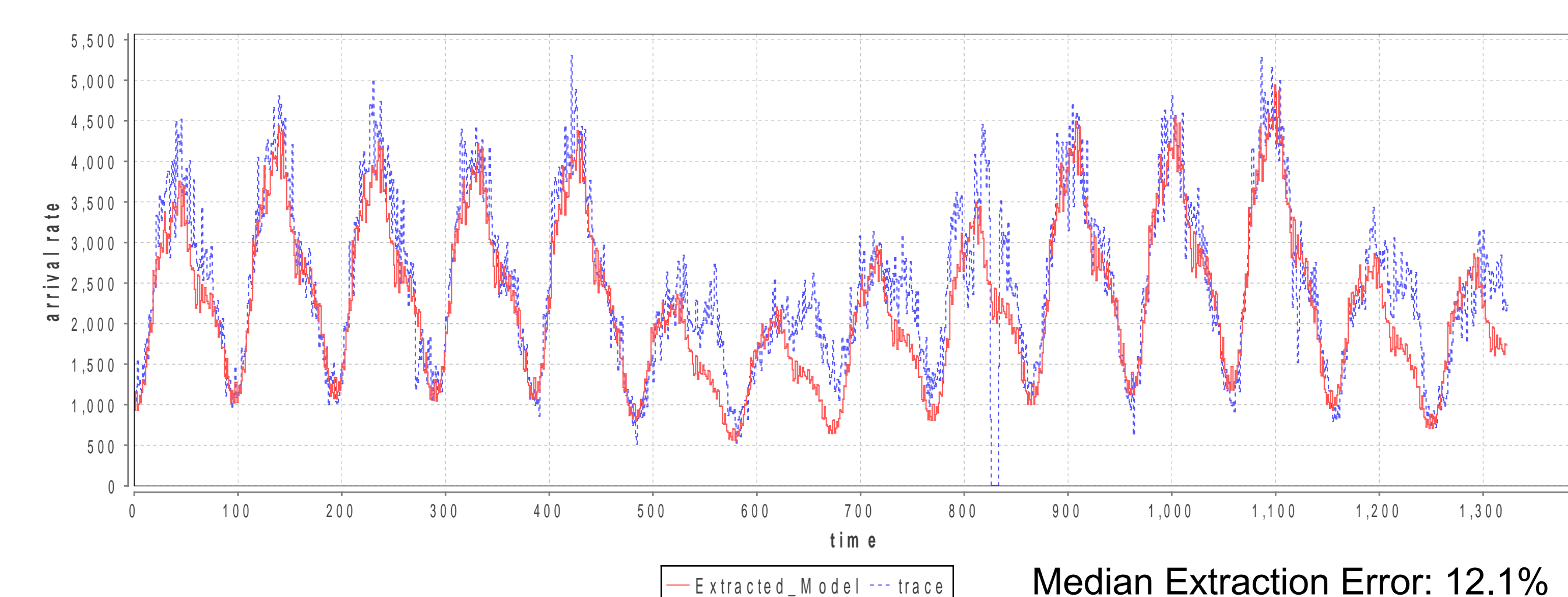
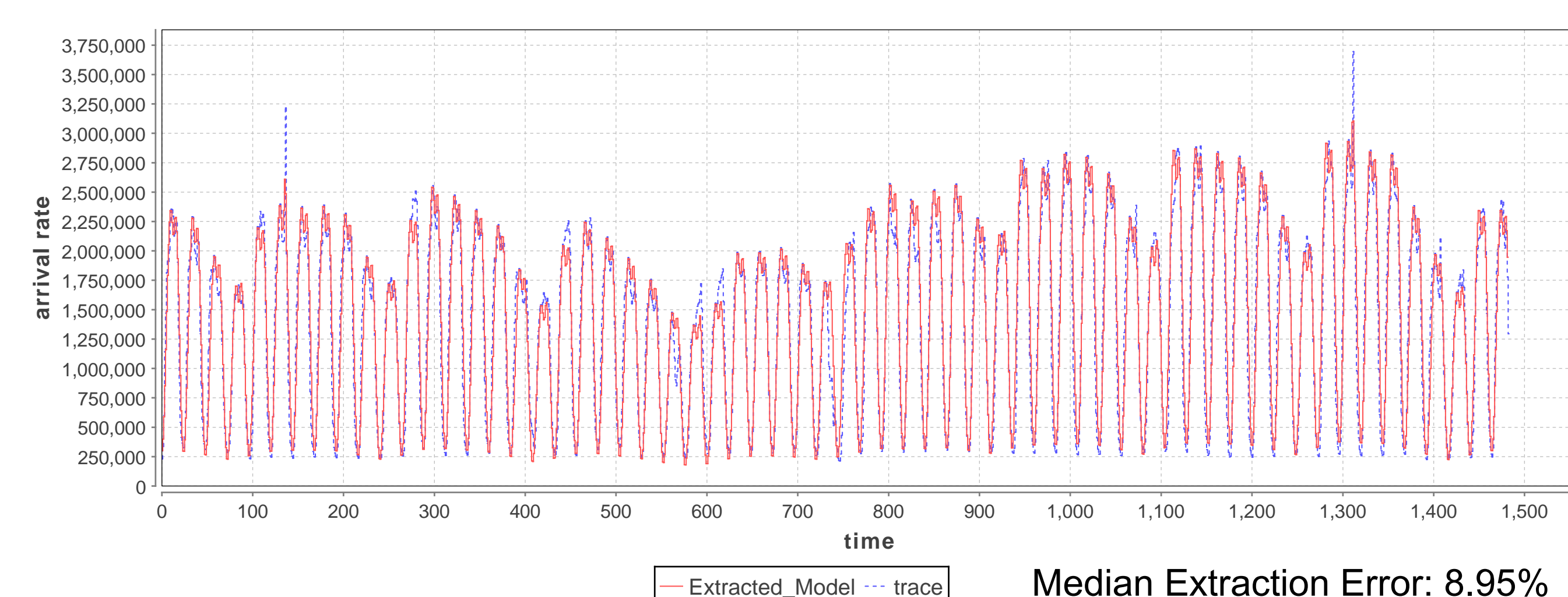
High-level Descartes Load Intensity Model

- For easy initial Model Creation using New Model Creation Wizard



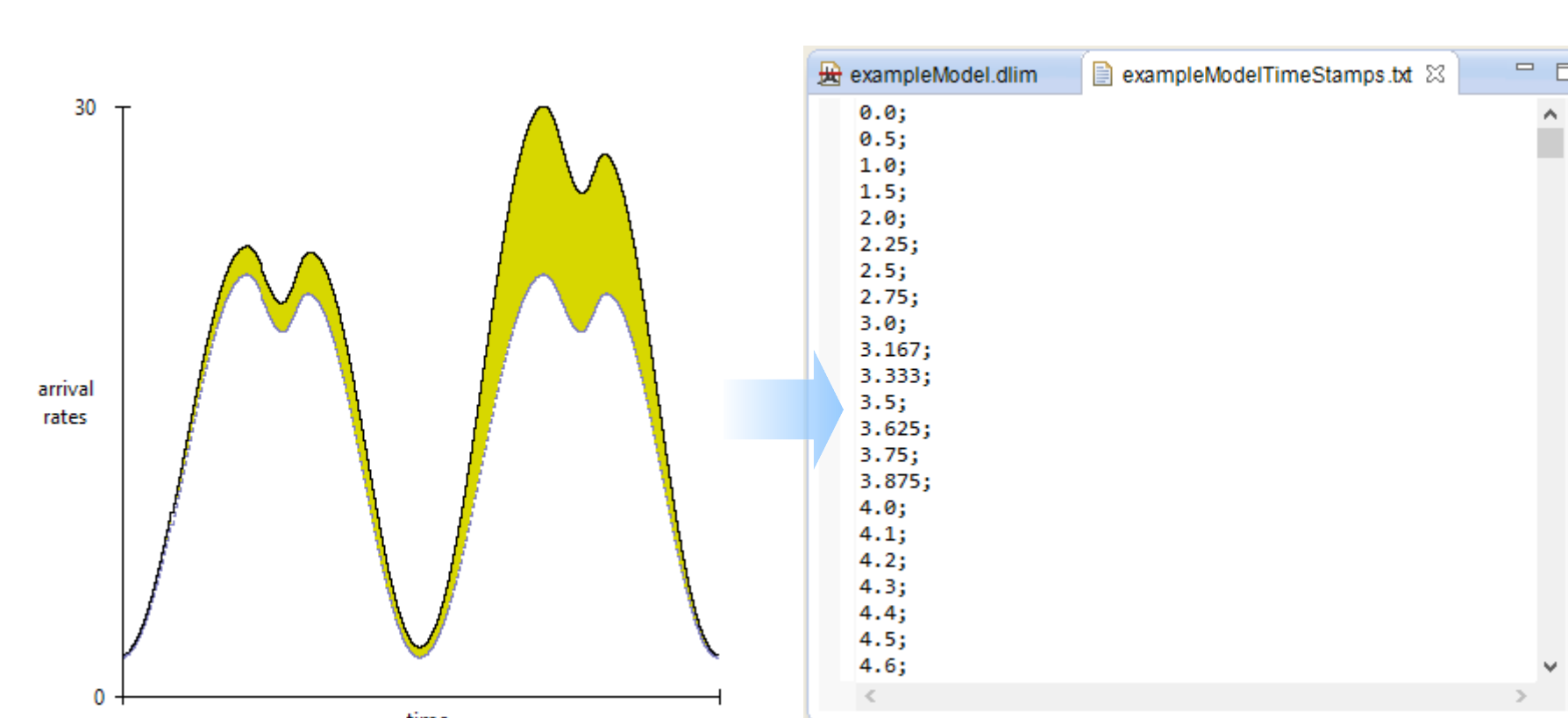
Extract Model Instances

- From existing traces
- Using one of multiple Extraction Methods



Generate Request / User Arrival Time Stamps

- From Load Intensity Description
- Use for Open-Workload based Benchmarking
- Combine with JMeter for mixed Workloads



<http://www.descartes-research.net/tools>